

TRANSFORMER DATA SHEET

DATE : 09/10/2019  
 CUSTOMER : HVES  
 CIRCUIT/LOCATION : HVES #85  
 MANUFACTURER : T&R Electric/Pauwels Transformers  
 TRANSFORMER TYPE : Pad Mount CLASS : OA  
 S/N : 02L118148

THREE PHASE  SINGLE PHASE  : 60 HERTZ

VOLTAGE RATING: 13200-208Y/120

LV WINDING: COPPER

KVA RATING: 500 Continuous, Self Cooled  
 Continuous, Forced Air

HV WINDING: COPPER

LV: 65°C rise, BIL: 30kV

HV: 65°C rise, BIL: 95kV

NAMEPLATE DATA

Core & Coils	1695
Case & Fittings	1245
Oil in Gallons	158
Weight in Pounds	4110

Fluid Type : Mineral Oil

Impedance volts : 2.85 % at rated volts at : 500 KVA

MEGGER TEST RESULTS

TRANSFORMER TEST DATA

1 Minute

POLARIZATION INDEX

CAPACITANCE

High-> Ground	20k	M-Ohms, @	5	kV DC	1.2	0.02	micro-farad
Low -> Ground	18k	M-Ohms, @	1	kV DC	1.4	0.02	micro-farad
High-> Low	20k	M-Ohms, @	1	kV DC	1.5	0.02	micro-farad

TRANSFORMER TTR TESTS

TAP (V)	CALC. TTR	PHASE 1	PHASE 2	PHASE 3
13200	110.000	109.912	109.911	109.907
12870	107.250	107.181	107.184	107.178
12540	104.500	104.456	104.456	104.449
12210	101.750	101.637	101.635	101.635
11880	99.000	98.911	98.910	98.906

COMMENTS

Date of Manufacture 12/2002  
 Dead front, radial feed, no fusing  
 Tag #11463

### Three Phase 500 KVA Padmount

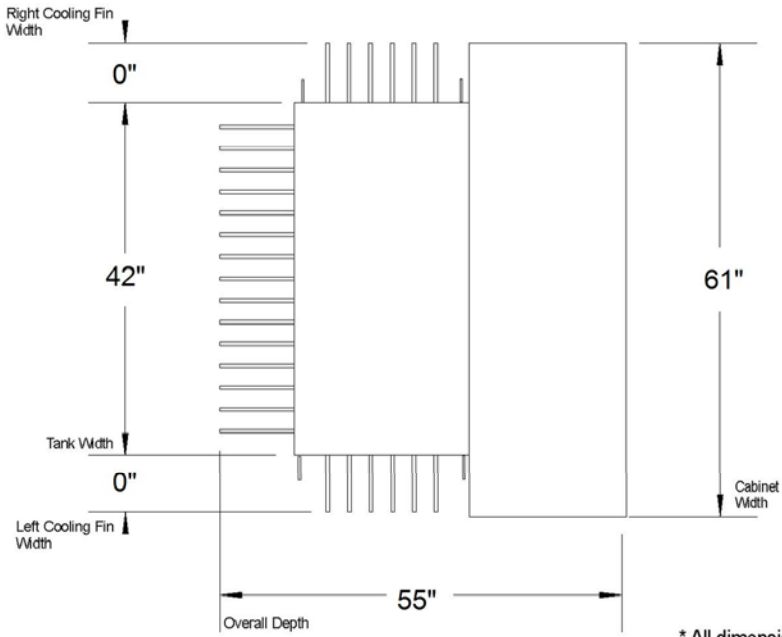
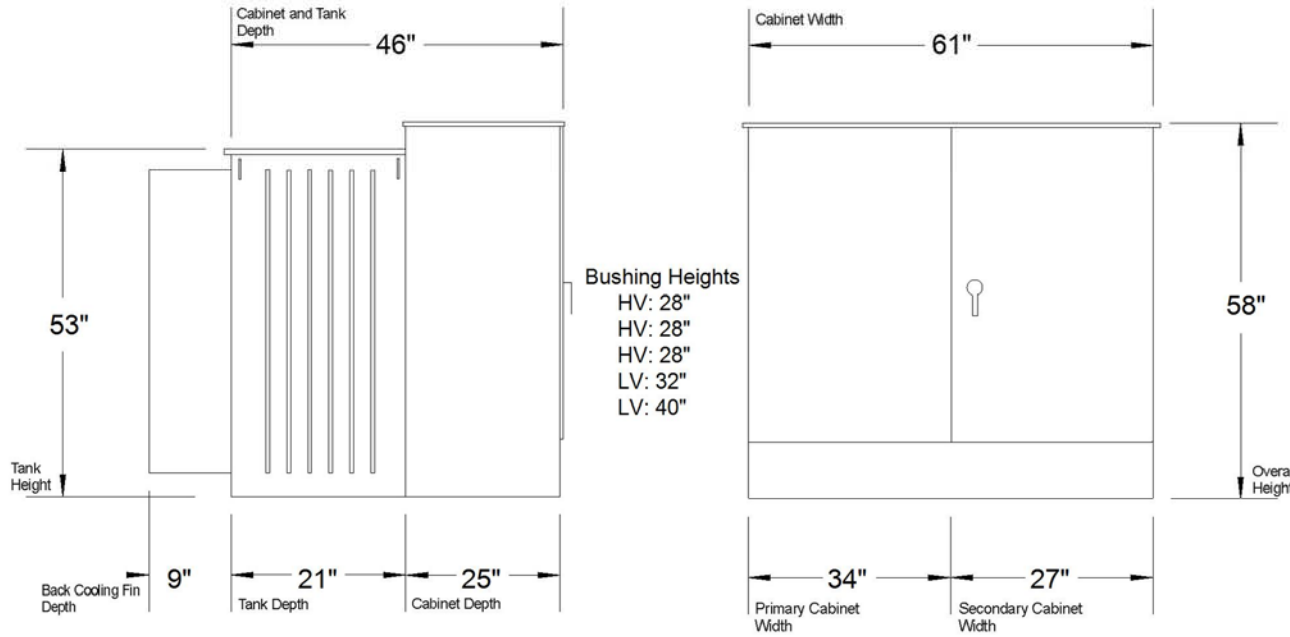
Primary: 13200 DELTA  
 Secondary: 208Y/120  
 Taps 4x2.5% Below Normal  
 Impedance: 2.85  
 Weight: 4110  
 Make: PAUWELS  
 S/N: 02L118148

#### Dimensions

Cabinet Width: 61"  
 Primary Cabinet Width: 34"  
 Secondary Cabinet Width: 27"  
 Cabinet Depth: 25"  
 Cabinet and Tank Depth: 46"  
 Overall Depth: 55"  
 Tank Width: 42"  
 Tank Depth: 21"  
 Left Cooling Fin: 0"  
 Right Cooling Fin: 0"  
 Back Cooling Fin: 9"  
 Overall Width: 64"  
 Cabinet Height: 58"  
 Tank Height: 53"

#### Notes

Dead Front, Radial Feed, 2-Pos. LBOR switch, 8 hole sp...



\* All dimensions are approximate and should not be used for engineering purposes.  
 \* Style of transformer and fins may vary from what is shown.



www.trelectric.com

Toll Free: 800-843-7994  
 Local: 605-534-3555  
 Fax: 605-534-3861

### Three Phase 500 KVA Padmount

Primary: 13200 DELTA  
 Secondary: 208Y/120  
 Taps 4x2.5% Below Normal

Stock Number	Record ID	Scale	Sales
<b>I627EE</b>	<b>527401</b>	<b>NTS</b>	sales@trelectric.com 2/28/2019



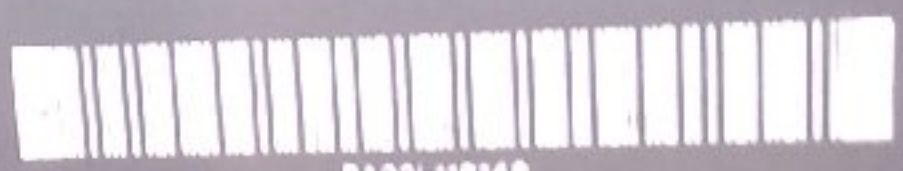
500

CAUTION  
THE SURFACE OF THIS UNIT  
MAY BE HOT TO TOUCH  
DURING NORMAL OPERATION  
AND MAY BE HOTTER  
DURING OVERLOADS OR  
SHORT CIRCUITS. CONTACT  
WITH HOT SURFACES  
MAY CAUSE BURNS OR  
OTHER INJURIES.  
AVOID CONTACT WITH  
HOT SURFACES.  
1527EE  
ELECTRICAL  
EQUIPMENT



**REALWELL** THE HUGGER TRANSFORMER  
 WASHINGTON, D.C. 20002  
 THREE PHASE 65°C RISE 60 HZ. CLASS OA TYPE OISC DBPC OIL

500 kVA HV 13200 DELTA  
 LV 208Y/120



PA02L118148

S/N 02L118148 2.85 %IMP.

MODEL ZA050132E200044

H.V. MAT'L CU L.V. MAT'L CU

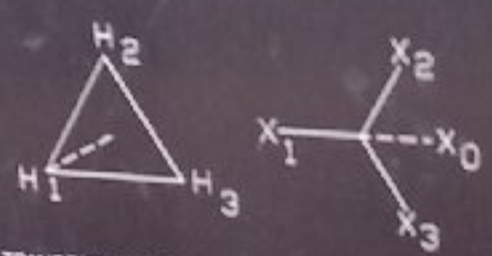
APPROXIMATE WEIGHTS

CORE AND COIL	1695	LBS
TANK AND FITTINGS	1245	LBS
LIQUID 158 GALS	1170	LBS
TOTAL	4110	LBS
UNTANKING	1695	LBS

DATE OF MFG. 12/02

RATED VOLTAGE	SWITCH POSITION
13200	A
12870	B
12540	C
12210	D
11880	E

H.V.BIL. 95 K.V.  
 L.V.BIL. 30 K.V.



THE TRANSFORMER IS FILLED WITH NON PCB MINERAL OIL THAT CONTAINS LESS THAN 1 PPM PCB AT THE TIME OF MANUFACTURE. THE 25°C LIQUID LEVEL IS 6.0 INCHES BELOW THE TOP OF THE HANDHOLE FLANGE. LIQUID LEVEL CHANGES ARE 0.5 INCHES PER 10°C CHANGE IN LIQUID TEMPERATURE. THE MAXIMUM AND MINIMUM OPERATING PRESSURES OF THE LIQUID PRESERVATION SYSTEM ARE +7.0 P.S.I. AND -2.0 P.S.I., RESPECTIVELY. THE TANK IS DESIGNED FOR 3.0 P.S.I. VACUUM FILLING (REFER TO INSTRUCTION BOOK NO. 7-8102).



506952-2