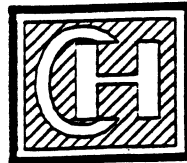


REVISION

1

4.00



Cutler-Hammer

Type: WLI	Master P.L.:
Enclosure Type: 3R	Assembly No.: 1
Encl. Category: B	Section No. 01
Mfd. At: Sumter	Date:
Maximum Continuous Operating Volts: 5000	3 Phase 60 Hz.
	kV BIL: 60

Current Ratings—Amperes
(As originally manufactured)

Main Bus	Section Bus
Continuous:	Continuous: 600
Momentary RMS Asym	Momentary RMS Asym 40,000
Short Time (2 Sec., Sym)	Short Time (2 Sec., Sym) 25,000

Type **WLI** Switchgear Assemblies meet the requirements of industry standards IEEE C37.20.3 and ANSI C37.57

This switchgear vertical section is suitable for use on a circuit capable of delivering not more than **50,000** RMS symmetrical amperes; **5,000** volts maximum.

See separate label inside for fuse continuous current ratings when fuses are mounted in this vertical section.

Replacement fuses shall be of the same manufacture, type, and ratings.

Instruction Book **IL31-930**

1A3378BH01

7.75

PREPARED BY

DATE

APPROVED BY

DATE

SWITCHGEAR NAMEPLATE CUTLER-HAMMER
1A3378BH01

Cutler-Hammer
SUMTER, S.C. 29154 USA

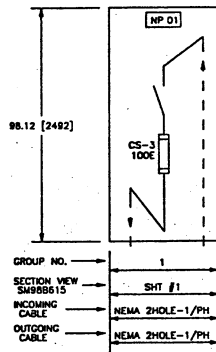
PARTS LIST NO.
SAME

GENERAL ORDER NO.

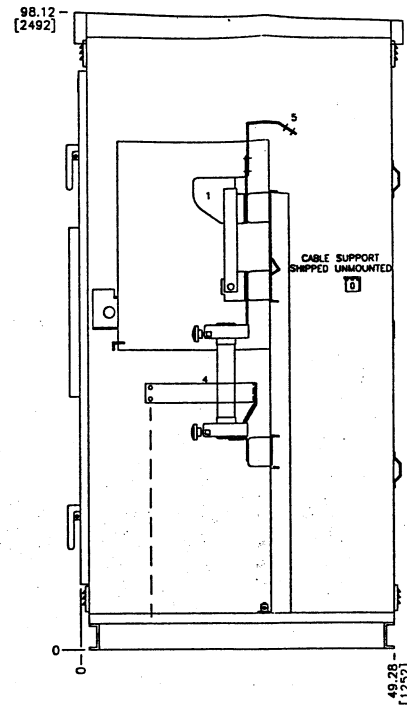
DWG NO.

SM

SM98B615



FRONT VIEW



NOTE:

1. ALL DOOR HANDLES AND MANUALLY OPERATED SWITCHES HAVE PROVISIONS FOR PADLOCKING.
2. DOOR CANNOT BE OPENED WHEN INTERRUPTER SWITCH IS CLOSED AND INTERRUPTER SWITCH CANNOT BE CLOSED WHEN DOOR IS OPEN.
3. SEE MAIN BILL OF MATERIAL FOR FINISH.
4. ENCLOSURE MATERIAL: IN ACCORDANCE W/ IEEE C37.20.3.
5. 16" X 4" SHATTERPROOF VIEWING WINDOW IN FRONT OF SWITCH, [406 X 102]
6. 120V, 250W SPACE HEATER IN OUTDOOR UNITS.
7. "DANGER HAZARDOUS VOLTAGE" SIGN ON ALL DOORS.
8. ALL DRAWINGS ARE NOT TO SCALE.
9. ALL DIMENSIONS SHOWN IN [] ARE IN MILLIMETERS [MM]. ALL WEIGHTS SHOWN IN [] ARE IN KILOGRAMS [KG].

THE INFORMATION ON THIS DOCUMENT IS CREATED BY CUTLER-HAMMER. IT IS DISCLOSED IN CONFIDENCE AND IS ONLY TO BE USED FOR THE PURPOSE IN WHICH IT IS SUPPLIED.

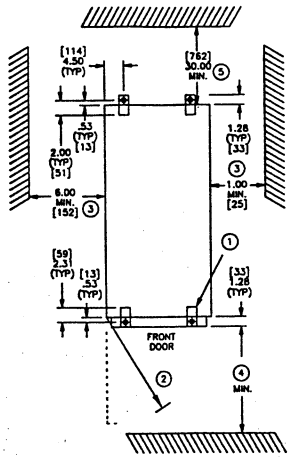
CUSTOMER INFO.

DFTD	TKJ	DATE	5/15/98	Cutler-Hammer	SUMTER SC
APPD	CWB	DATE	5/15/98	TITLE	WLI-1
APPD		DATE		TYPE	Outdoor Switchgear, 4.16kV System Voltage
SCALE	N.T.S.	PARTS LIST	SM98A745	REVISION	1
		DWG SIZE	B	G.O.	HAY64869
		DWG	SM98B615	SHEET	1 OF 2

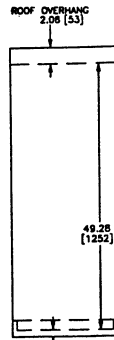
REVISION

F
E
D
C
B
A

SM98B615

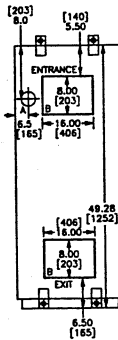


ROOF PLAN



GROUP NO.	1
WIDTH PER UNIT	36 [914]
APPROXIMATE SHIP. WEIGHT IN LBS & KG	1500 [680]
SHIP. SECT. AS INDICATED	36 [914]

FLOOR PLAN



- ① LOCATIONS FOR CUSTOMER'S TIE-DOWN CLIPS.
- ② DOOR SWING EQUALS UNIT WIDTH AT 90 DEGREES.
- ③ MINIMUM CLEARANCES ON SIDE. LOCAL JURISDICTIONS MAY REQUIRE A LARGER CLEARANCE.
- ④ MINIMUM CLEARANCES IN FRONT IS THE WIDTH OF THE WIDEST VERTICAL SECTION PLUS ONE INCH. LOCAL JURISDICTIONS MAY REQUIRE A LARGER DISTANCE.
- ⑤ MINIMUM CLEARANCES IN REAR. LOCAL JURISDICTIONS MAY REQUIRE A LARGER DISTANCE.
- ⑥ FINISHED FOUNDATION UNDER THE SWITCHGEAR MUST BE FLAT, LEVEL AND IN TRUE PLANE.

TYPICAL ANCHOR PLAN FOR OUTDOOR UNITS

NOTE:

- A. SUGGESTED LOCATION OF LOW VOLTAGE CONDUIT ENTRANCE 2" IPS MAX. [51]
- B. UNOBSTRUCTED AREA FOR CUSTOMER CONDUIT, CENTERED LEFT TO RIGHT IN UNIT. CONDUIT PROJECTION NOT TO EXCEED 3 INCHES.

THE INFORMATION ON THIS DOCUMENT IS CREATED BY CUTLER-HAMMER. IT IS DISCLOSED IN CONFIDENCE AND IS ONLY TO BE USED FOR THE PURPOSE IN WHICH IT IS SUPPLIED.				CUSTOMER INFO.	
DTR	TKJ	DATE	5/15/98	Cutler-Hammer SUMTER SC	
APPD	CWB	DATE	5/15/98	TITLE WLI-1	
APPD		DATE		TYPE Structure Layout	
SCALE	PARTS LIST	REVISION	DWG SIZE	G.O.	SHEET
N.T.S.	SM98A745	1	B	HAY64869	2 OF 2

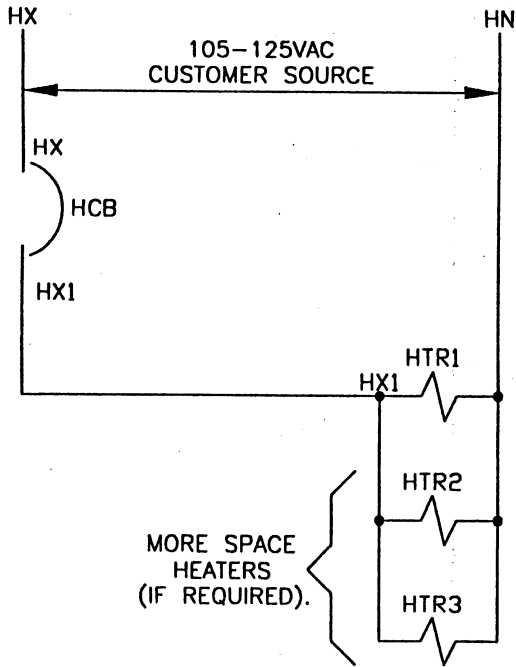
REVISION	1
----------	---

REVISION:

NOTES:

- 1) SEE PARTS LIST FOR SPECIFIC STYLE NOS. AND RATINGS OF ALL DEVICES.
- 2) EACH DEVICE IS SHOWN FRONT VIEW AND DENERGIZED UNLESS OTHERWISE NOTED.
- 3) ALL LV WIRE IS TYPE SIS, 600V TINNED CU. REFER TO 6008A28 FOR WIRE SIZING.

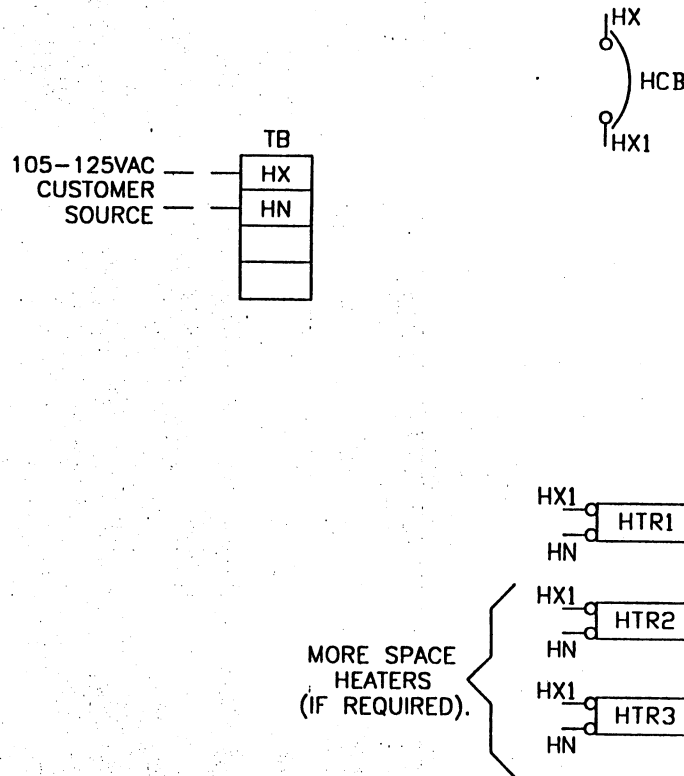
PREPARED BY MLH	DATE 6/20/96	GENERAL ORDER NO. STANDARD	SUB. DWG NO. 1	1A33850	SHT. 1 OF 5
APPROVED BY TGR	DATE 6/20/96	SCHEMATIC & WIRING DIAGRAM, "A" 125VAC TB,CB,HTR(S) CUSTOMER SUPPLIED SOURCE			
SUMTER, S.C. 29154 USA	PARTS LIST NO. NONE				



- SCHEMATIC DIAGRAM -

LEGEND:

- HCB - HEATER CIRCUIT BREAKER
- HTR - SPACE HEATER
- TB - TERMINAL BLOCK



- WIRING DIAGRAM -

WIRE NO	WIRE RUN
HX	TB,HCB HCB,HTR1,HTR2 HTR3,HTRn TB,HTR1,HTR2, HTR3,HTRn
HX1	
HN	

UNIT 32

Cutter-Hammer
Manufacturing & Distribution Division

SWITCH #1

5KV FUSED
DISCONNECT SWITCH
RATED 600A CONTINUOUS
60 KV BIL
GE FUSES TYPE 9F62 5.5KV
12" CLIP CENTERS

