

TRANSFORMER DATA SHEET

DATE : 06/01/1998
 CUSTOMER : HVES
 CIRCUIT/LOCATION : HVES 8
 MANUFACTURER : RTE/Sunbelt
 TRANSFORMER TYPE : Oil Filled CLASS : OA/FFA
 S/N : ST129857857
 THREE PHASE SINGLE PHASE : 60 HERTZ

VOLTAGE RATING: 13800 Delta - 4160Y/2400 LV WINDING: COPPER
 KVA RATING: 3750 Continuous, Self Cooled HV WINDING: COPPER
 4200 Continuous, Forced Air LV: 55°C rise, BIL: 60 kV
 HV: 65°C rise, BIL: 95 kV

NAMEPLATE DATA

Core & Coils	10630
Case & Fittings	5990
Oil in Gallons	931/6870
Weight in Pounds	23400

Impedance volts : 6.33 % at rated volts at : 3750 KVA

TRANSFORMER TEST DATA

MEGGER TEST RESULTS

POLARIZATION
INDEX

CAPACITANCE in
MICRO-FARAD

	1 Minute					
High-> Ground	25k	M-Ohms, @	5	kV DC		
Low -> Ground	20k	M-Ohms, @	5	kV DC		
High-> Low	45k	M-Ohms, @	5	kV DC		

TRANSFORMER TTR TESTS

TAP (V)	CALC. TTR	PHASE 1	PHASE 2	PHASE 3
13800	5.750	5.757	5.758	5.757
13455	5.606	5.627	5.627	5.628
13110	5.500	5.483	5.483	5.483
12765	5.319	5.337	5.338	5.338
12420	5.175	5.192	5.193	5.193

COMMENTS

Tag 10500
 Date of manufacture: n/a
 Stored at Mullin's Yard

MFG : RTE
 HIGH VOLTAGE: 13800 DELTA
 LOW VOLTAGE : 4160Y/2400
 TYPE: SUB/OA/FA HZ: 60
 RISE: 55/65 C % IMP: 6.33

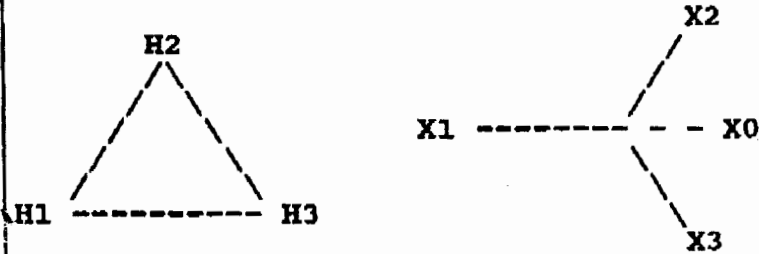
S/N : ST69857375-37-R
 KVA : 3750/4200
 AMPS: 520
 HV BIL : 110 KV-CU
 LV BIL : 60 KV-CU

HIGH VOLTAGE	TAP CHANGER CONNECT	POS	AMPS
: 13800	: TO:	: A	: 156.9
: 13455	: TO:	: B	: 160.9
: 13110	: TO:	: C	: 164.0
: 12765	: TO:	: D	: 169.6
: 12420	: TO:	: E	: 174.3

APPROX. WEIGHT IN POUNDS
 UNTANKING : 10630
 TANK & FITTING: 5990
 LIQ : MIN OIL
 GAL: 931 : 6780
 TOTAL WEIGHT : 23400

:
 :
 :
 :

: . (TOP VIEW)
 : : X0
 : H3 : : X3
 : H2 : : X2
 : H1 : : X1
 : : DRAIN VALVE SIDE



THREE PHASE TRANSFORMER

SUNBELT TRANSFORMER INC.
 TEMPLE, TEXAS

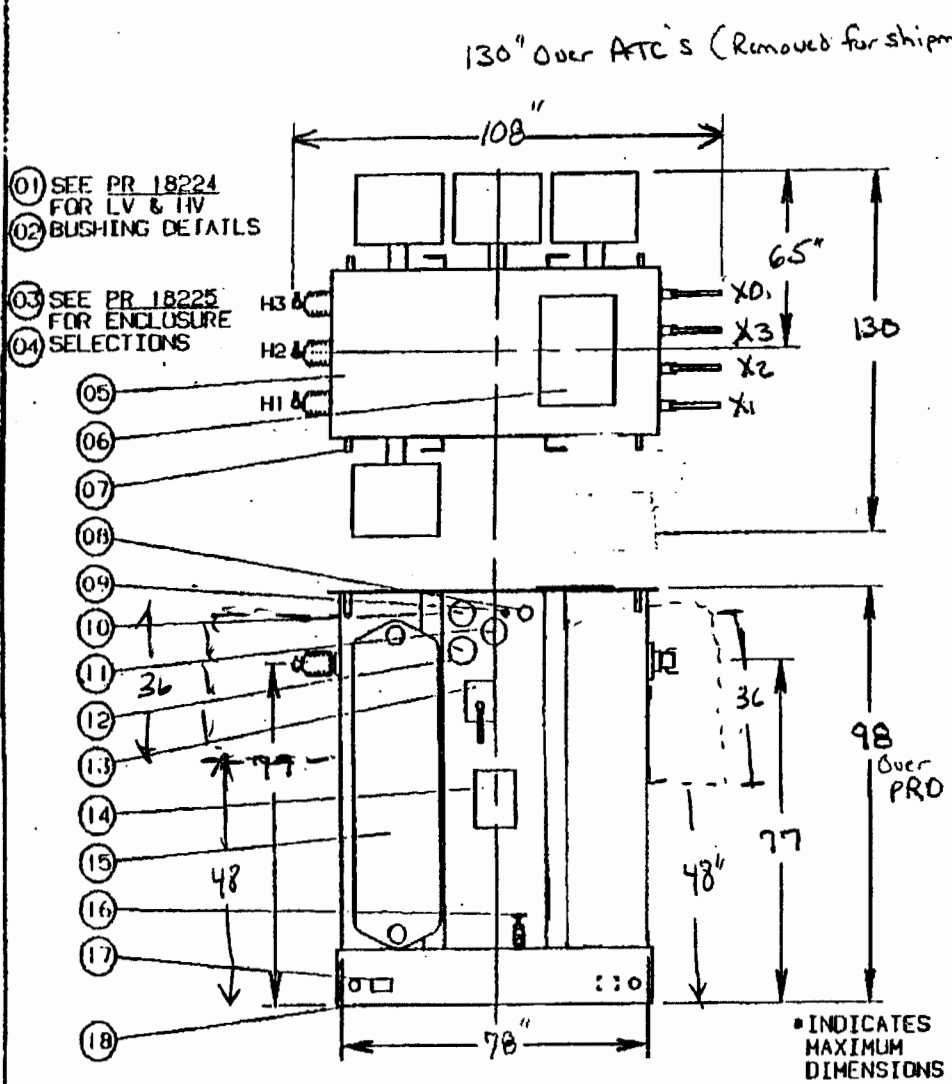
DELTA-WYE NAMEPLATE

DEC 20 '98 01:22PM SUNBELT SHIRON PR P. 1/4

- STANDARD FEATURES**
1. LV BUSH. W/NEMA SPADE
 2. HV BUSHING W/EYE BOLT
 3. HV ENCLOSURE FIG. _____
 4. LV ENCLOSURE FIG. _____
 5. WELDED COVER
 6. MANHOLE 11.25 X 15.50
 7. LIFTING LUG
 8. UPPER FILTER PRESS CONN
 9. PRESSURE RELIEF VALVE
 10. PRESSURE VACUUM GAUGE
 11. LIQUID LEVEL GAUGE
 12. LIQUID TEMP. GAUGE
 13. TAP CHANGER DE-ENERG.
 14. S.S. NAMEPLATE
 15. COOLING RADIATORS
 16. 1" DRAIN VALVE WITH 3/8" SAMPLER
 17. S.S. GROUND PADS W/BASE & XO BUSH
 18. BASE W/PROV FOR JACKING & ROLLING

- OPTIONAL FEATURES**
- CHECK WHEN REQUIRED
 - WINDING TEMP INDICATOR
 - CONTROL BOX
 - UPPER FILL VALVE
 - PRES RELIEF DEVICE
 - PRES RELIEF DEVICE W/CONTACTS
 - PRES VAC REGULATOR
 - PRES VAC W/CONTACTS
 - LIO LEVEL W/CONTACTS
 - LIO TEMP. W/CONTACTS
 - RAPID RISE RELAY (RRR)
 - (RRR) W/SEAL-IN-PANEL

THIS OUTLINE IS FOR ERECTION OR MOUNTING PURPOSES. IT IS NOT TO SCALE AND SHOULD NOT BE REGARDED AS INDICATING THE EXACT DETAILS OF CONSTRUCTION.



CUSTOMER: GENERGY
 PROJECT: _____
 ITEM #: _____
 PROPOSAL #: _____
 P.O. #: _____
 APPROVED: _____
 DATE: _____

RATINGS

QTY: 1 KVA: 3750
 PHASE: 3Ø FREQ.: 60 HZ
 TEMP. RISE: 65°C 55/65°C
 CLASS: OA (225-500 KVA)
 OA/FFA (STD 750 KVA & UP)
 OA/FFA (CONTROLS/NO FANS)
 OA/FA (FORCED AIR)
 PRIMARY: 13800 VOLTS-DELTA
110 KV BIL
 TAPS: ±2-2.5% DE-ENERGIZED
 SECONDARY: 4160Y/2400
60KV BIL
 IMPEDENCE: 6.7% ±7.5% TOLERANCE
 PRI & SEC COPPER WINDINGS
 COLOR(ANSI): #49 #61 #70

SECONDARY UNIT SUBSTATION
 HV: LEFT / FLUID: OIL

REV 00,06-19-89

MFG

S/N

HIGH VOLTAGE

KVA

LOW VOLTAGE

LV AMPS

TYPE HZ

HV BIL

RISE °C % IMP

LV BIL

HIGH VOLTAGE	TAP CHANGER		
	CONNECT	POS	AMPS
13800	TO	A	156.9
13455	TO	B	160.9
13110	TO	C	165.1
12765	TO	D	169.6
12420	TO	E	174.3

APPROX. WEIGHT IN POUNDS

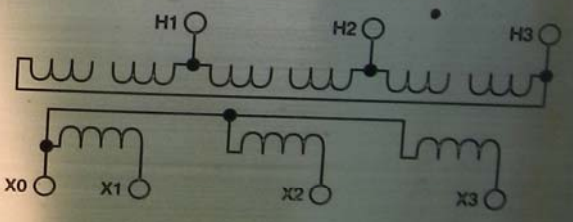
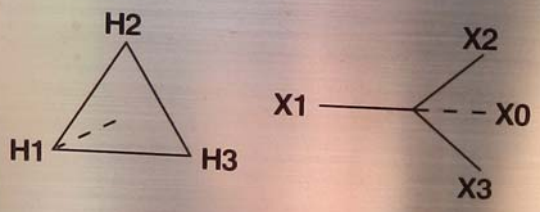
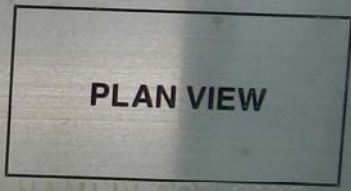
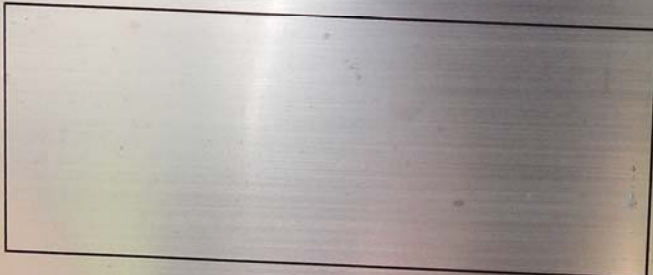
UNTANKING

TANK & FITTING

LIQUID

GAL

TOTAL WEIGHT



The 25°C Level is _____ Inches from the Highest Point of the Handhole Flange Surface. Liquid Level changes _____ Inches with each 10°C change in Liquid temp.
 Operating Pressure: _____ (+)psi _____ (-)psi



SUNBELT TRANSFORMER INC.
 TEMPLE, TX SHARON, PA 1-800-433-3128
 3 Ø TRANSFORMER

SB-2

UNIT #8



UNIT # 800 PCS
TERMINAL 1-4-11
NO 12000 SEER
12 4000-2400
WT 2400 LB
TAPS 12000 12455 1200
12000 12455
FULL LOAD AMPS 12 12 12000
SEE AT 4000