

TRANSFORMER DATA SHEET

DATE : 01/08/2004  
 CUSTOMER : HVES  
 CIRCUIT/LOCATION : HVES 40  
 MANUFACTURER : General Electric  
 TRANSFORMER TYPE : Pad Mount CLASS : OA  
 S/N : Q569008-TTS  
 THREE PHASE  SINGLE PHASE  : 60 HERTZ

VOLTAGE RATING: 4800 Delta - 480Y/277 LV WINDING: ALUMINUM  
 KVA RATING: 300 Continuous, Self Cooled HV WINDING: ALUMINUM  
 Continuous, Forced Air LV: 65°C rise, BIL: 30 kV  
 HV: 65°C rise, BIL: 60 kV

NAMEPLATE DATA

Core & Coils	1100
Case & Fittings	1300
Oil in Gallons	225/1800
Weight in Pounds	4200

Impedance volts : 3.92 % at rated volts at : 300 KVA

TRANSFORMER TEST DATA

MEGGER TEST RESULTS

POLARIZATION INDEX

CAPACITANCE in MICRO-FARAD

	1 Minute				INDEX	
High-> Ground	13.3k	M-Ohms, @	5	kV DC	1.86	0.01
Low -> Ground	>1.01k	M-Ohms, @	1	kV DC	-	-
High-> Low	28.2k	M-Ohms, @	5	kV DC	6.45	0.01

TRANSFORMER TTR TESTS

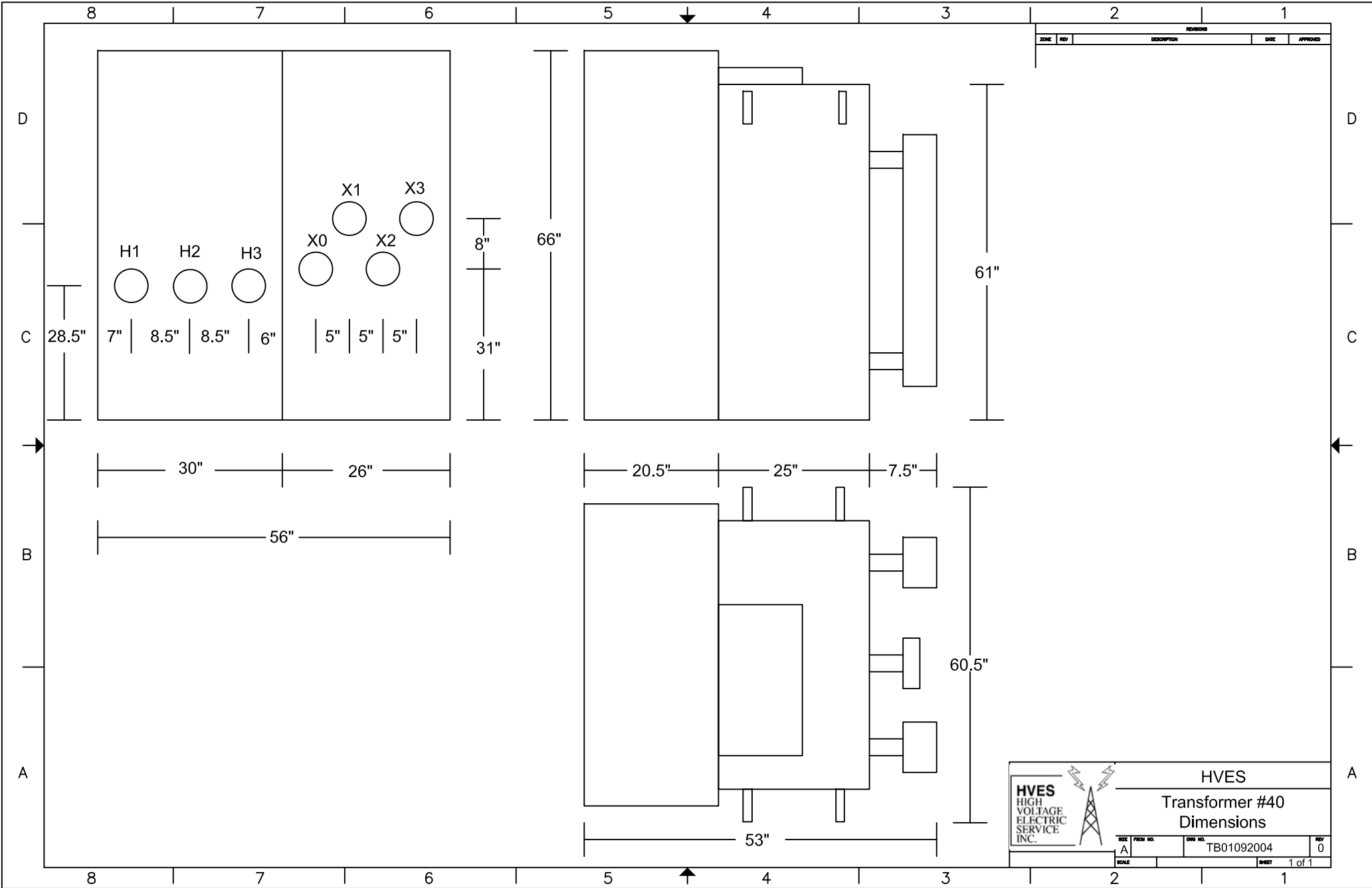
TAP (V)	CALC. TTR	PHASE 1	PHASE 2	PHASE 3
5040	18.195	18.169	18.172	18.170
4920	17.762	17.778	17.781	17.778
4800	17.329	17.343	17.346	17.344
4680	16.895	16.908	16.911	16.910
4560	16.462	16.474	16.477	16.475

COMMENTS


Tag 10778  
 Date of manufacture: 06/2001  
 Stored at Dave's Yard

10 Minute Megger Test  
 H-G: 24.8k M-ohms  
 L-G: <1.01k M-Ohms  
 H-L: 18.1k M-ohms

Silicone Fluid



ZONE		REV	DESCRIPTION	DATE	APPROVED

<b>HVES</b> HIGH VOLTAGE ELECTRIC SERVICE INC.			<b>HVES</b>	
			<b>Transformer #40</b> <b>Dimensions</b>	
SIZE: A SCALE:	DRAWING NO.: TB01092004	REV: 0	SHEET: 1 of 1	

UNIT 40                      NON PCB  
300KVA                      Z = 3.92%  
HV 4800 DELTA  
LV 480Y / 277  
WT=4200LBS  
TAPS 5040 / 4920 / 4800  
          4680 / 4560  
FULL LOAD AMPS = 36 AT 4800V

UNIT 48

U  
22  
HV  
LV  
WT  
TAPS  
FULL