

TRANSFORMER DATA SHEET

DATE : 08/03/2016  
 CUSTOMER : HVES  
 CIRCUIT/LOCATION : HVES 38  
 MANUFACTURER : Rex Mfg.  
 TRANSFORMER TYPE : Isolation/dry CLASS : ANN  
 S/N : D-06  
 THREE PHASE  SINGLE PHASE  : 60 HERTZ

VOLTAGE RATING: 460 Delta - 460Y/266 LV WINDING: ALUMINUM  
 KVA RATING: 34 Continuous, Self Cooled HV WINDING: COPPER  
 Continuous, Forced Air LV: 150°C rise, BIL: 10kV  
 HV: 150°C rise, BIL: 10kV

NAMEPLATE DATA

Core & Coils	
Case & Fittings	
Oil in Gallons	
Weight in Pounds	280

Impedance volts : 6.0 % at rated volts at : 34 KVA

**TRANSFORMER TEST DATA**

MEGGER TEST RESULTS

POLARIZATION  
INDEX

CAPACITANCE in  
MICRO-FARAD

	1 Minute				
High-> Ground		M-Ohms, @		kV DC	
Low -> Ground		M-Ohms, @		kV DC	
High-> Low		M-Ohms, @		kV DC	

TRANSFORMER TTR TESTS

TAP (V)	CALC. TTR	PHASE 1	PHASE 2	PHASE 3
483 105.1%				
471 102.5%				
460 100%				
449 97.5%				
437 95%				

COMMENTS

Tag 10960  
 Cat. No.: DA34H1P1  
 S/O No. : 60418155  
 Date of manufacture: n/a  
 Stored at 6 Seward St.



REX POWER MAGNETICS

A DIVISION OF TRANSFACTOR INDUSTRIES INC.
65 BASALTIC RD, CONCORD, ON, CA L4K 1G4
TEL: 905-695-8844 FAX: 905-695-8855
WWW.REXPOWERMAGNETICS.COM

TRANSFORMER SPECIFICATION

- 3 Phase Drive Isolation
- Dry Type
- ANN Self Cooled
- Suitable for Nonsinusoidal Current Load with a K-Factor not to exceed 4

Purchaser: TBA
PO#: TBA
SWO#: TBA
Qty: TBA

Coils: Aluminum
Cat. No.: DA34H1-P1
kVA: 34
Primary: 460 Delta Volts
Secondary: 460 Y/266 Volts
Primary Taps: 2.5 %
-Taps FCAN 2
-Taps FCBN 2
Frequency: 60 Hz
BIL: 10 kV
Insulation Class: 220° C
Temperature Rise: 150° C
Impedance: 5.0 - 6.0 %
Weight: 300 Lbs

Table with 3 columns: Termination, Location, Lug Size. Rows for Primary and Secondary.

Wiring Connection:

Primary: H1-H2-H3
Voltage % Tap Jumpers To:
483 105.0 1-1-1
472 102.5 2-2-2
460 100.0 3-3-3
449 97.5 4-4-4
437 95.0 5-5-5
Secondary: X0-X1-X2-X3
Voltage Phase Connect Loads To:
460 3 X1-X2-X3
266 1 X0-X1, X0-X2, and/or X0-X3

Preliminary Drawing ONLY

This drawing may NOT truly reflect our final design. Any resulting order(s) must be accompanied by or refer to this drawing and be marked with any proposed changes

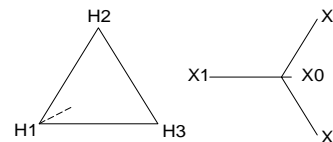
Standards:

- 1. CSA Certified - File No. LR34493
2. UL Listed - File No. E108255

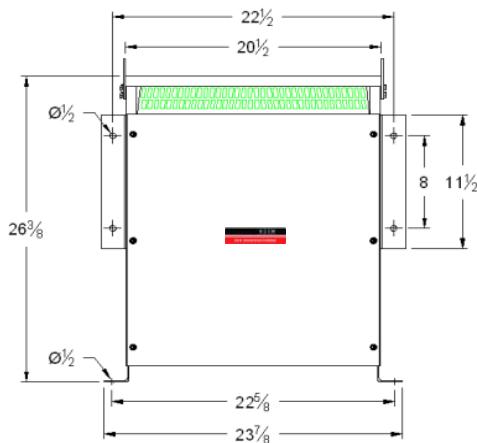
Standard Features:

- 1. Anti-vibration pads installed between the enclosure base and the core & coil assembly
2. Lug for Earth Grounding provided
3. Neutral rated 200% of the line terminals
4. NC 200°C thermostat installed at the centre coil

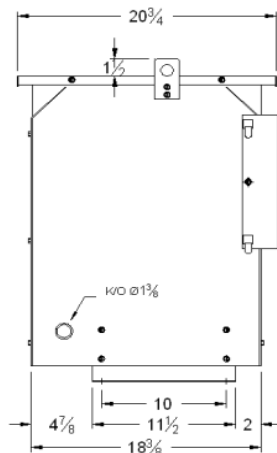
VECTOR GROUP



30° PHASE SHIFT



FRONT VIEW



SIDE VIEW

CSA Enclosure:

- 1. Type 3R (NEMA 3R) - Sprinklerproof when the angle between sprinkler heads and opening in the enclosure does not exceed 45 degree from the vertical.
2. Ventilated
3. ASA 61 grey
4. Floor/Wall mounting

Table with 5 columns: Rev., Remarks, By, Appr. By, Date.

Prepared by: AP
Approved by: VS

**SUITABLE FOR NONSINUSOIDAL CURRENT  
LOAD WITH A K FACTOR NOT EXCEED 4**

**N.C.THERMOSTAT AT RATED 200 DEGREE C.  
240 VOLT AT 1.5 AMPS  
120 VOLT AT 3.0 AMPS**



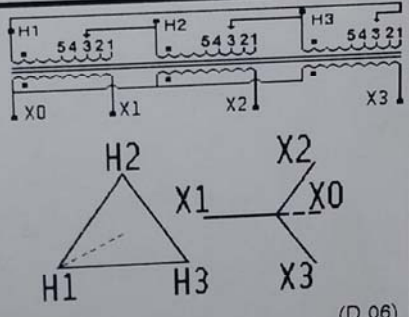
LISTED  
**POWER  
TRANSFORMER**  
82U8

**REX MANUFACTURING**  
DIVISION OF TRANSFACTOR INDUSTRIES INC.   
REXDALE, ONT. LR34493



CAT. NO.	DA34H1P1	KVA	34	ENCL.	TYPE-2
SERIAL NO.	D 06	HZ	60	TYPE	ANN
TRANSFORMER	3 PH. ISO.	% IMP.	6.0	AT	170 C.
INSULATION CLASS	220 C.	TEMPERATURE RISE	150 C.		
PRI. VOLTAGE	460 V DELTA H1-H2-H3	BIL.	10 KV.		
SEC. VOLTAGE	460Y/266 V X0-X1-X2-X3	WT.	280 LBS.		

PRI. VOLTAGE	CONNECTION CONNEXION
105.1%	1-1-1
102.5%	2-2-2
100%	3-3-3
97.5%	4-4-4
95%	5-5-5



(D 06)

**SPRINKLERPROOF WHEN THE ANGLE BETWEEN  
SPRINKLER HEADS AND OPENINGS IN THE  
ENCLOSURE DOES NOT EXCEED 45°  
FROM THE VERTICAL**

**A L'EPREUVE DES INFILTRATIONS D'EAU  
LORSQUE L'ANGLE ENTRE LES GICLERS ET LES  
OUVERTURES DU BOITIER N'EST PAS SUPERIEUR  
A 45° PAR RAPPORT A LA VERTICALE**

**WEATHER RESISTANT NEMA 3R RATED  
WHEN OPTIONAL WEATHER SHIELD  
KIT 5H IS INSTALLED**

**CU-AL**



**REX MANUFACTURING  
ISOLATION TRANSFORMER**



SUITABLE FOR NONINDUSTRIAL CURRENT  
LOAD WITH A K FACTOR NOT EXCEED 4  
R.C. TRANSFORMER AT RATED 200 HERTZ C.  
240 VOLT AT 1.0 AMP  
120 VOLT AT 2.0 AMP



REX MANUFACTURING  
DIVISION OF TRANSFORMER INDUSTRIES INC.  
MEXICALI, ONT.

TYPE NO.	025400101	UNIT	24	TYPE	2
POWER RATING	0.000	VA	000	VA	0000
PRIMARY VOLTAGE	208	V	0.0	VA	1700 C
SECONDARY VOLTAGE	480 V	0.0	0.0	VA	0.0 C
TYPE	4000	0.0	0.0	VA	0.0 C
TYPE	4000	0.0	0.0	VA	0.0 C

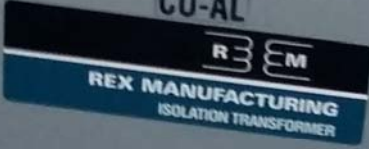
  

VOLTS	AMPERES	VA
100-11	1-1-1	
100-53	2-2-2	
100-0	3-3-3	
100-1	4-4-4	
100-2	5-5-5	


BEFORE OPENING VERIFY THE RATIO BETWEEN  
PRIMARY AND SECONDARY WINDINGS IN THE  
FIELD WITH AN INSTRUMENT AT  
THE POINT OF CONNECTION AT  
THE POINT OF CONNECTION AT  
THE POINT OF CONNECTION AT  
THE POINT OF CONNECTION AT

CU-AL



**WESTWARD**  
3 Ton  
Quick Lifting  
Service Jack SUV

Model: 14991

Capacity: 3000 kg (6600 lbs)

Height: 1100 mm (43.3 in)

Width: 450 mm (17.7 in)

Depth: 450 mm (17.7 in)

Weight: 150 kg (330 lbs)

Net Weight: 130 kg (286 lbs)

Gross Weight: 150 kg (330 lbs)

Net Capacity: 2700 kg (5940 lbs)

Gross Capacity: 3000 kg (6600 lbs)

Net Height: 1050 mm (41.3 in)

Gross Height: 1100 mm (43.3 in)

Net Width: 450 mm (17.7 in)

Gross Width: 450 mm (17.7 in)

Net Depth: 450 mm (17.7 in)

Gross Depth: 450 mm (17.7 in)

Net Weight: 130 kg (286 lbs)

Gross Weight: 150 kg (330 lbs)

Net Capacity: 2700 kg (5940 lbs)

Gross Capacity: 3000 kg (6600 lbs)

Net Height: 1050 mm (41.3 in)

Gross Height: 1100 mm (43.3 in)

Net Width: 450 mm (17.7 in)

Gross Width: 450 mm (17.7 in)

Net Depth: 450 mm (17.7 in)

Gross Depth: 450 mm (17.7 in)