

TRANSFORMER DATA SHEET

DATE : 01/07/2000
 CUSTOMER : HVES
 CIRCUIT/LOCATION : HVES 27
 MANUFACTURER : General Electric
 TRANSFORMER TYPE : Oil/pad-mount CLASS : OA
 S/N : Q543308-TPP
 THREE PHASE SINGLE PHASE : 60 HERTZ

VOLTAGE RATING: 13800-208Y/120 LV WINDING: ALUMINUM
 KVA RATING: 150 Continuous, Self Cooled HV WINDING: ALUMINUM
 Continuous, Forced Air LV: 65°C rise, BIL: 30 kV
 HV: 65°C rise, BIL: 95 kV

NAMEPLATE DATA

Core & Coils	550
Case & Fittings	1200
Oil in Gallons	215
Weight in Pounds	3350

Impedance volts : 5.33 % at rated volts at : 150 KVA

TRANSFORMER TEST DATA

MEGGER TEST RESULTS

1 Minute

High-> Ground	77.0k	M-Ohms, @	5	kV DC
Low -> Ground	3.98k	M-Ohms, @	.5	kV DC
High-> Low	89.5k	M-Ohms, @	.5	kV DC

POLARIZATION

INDEX

3.46
2.14
2.42

CAPACITANCE in

MICRO-FARAD

.01
.01
.01

TRANSFORMER TTR TESTS

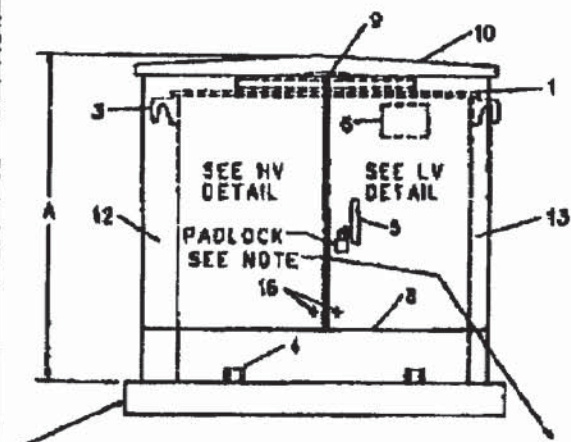
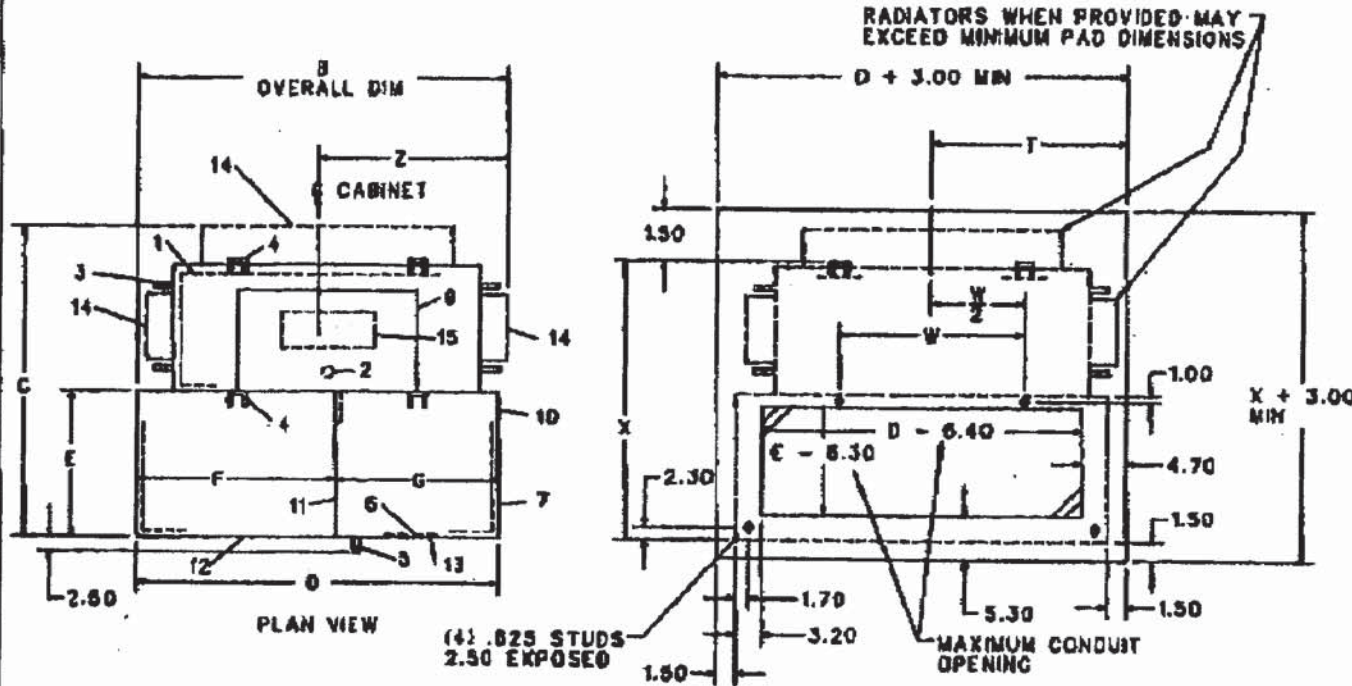
TAP (V)	CALC. TTR	PHASE 1	PHASE 2	PHASE 3
14490	120.75	120.737	120.762	120.762
14145	117.87	117.863	117.885	117.880
13800	115.00	114.989	115.010	115.003
13455	112.12	112.116	112.134	112.130
13110	109.25	109.237	109.236	109.257

COMMENTS

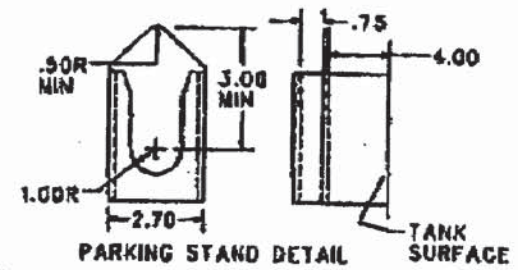
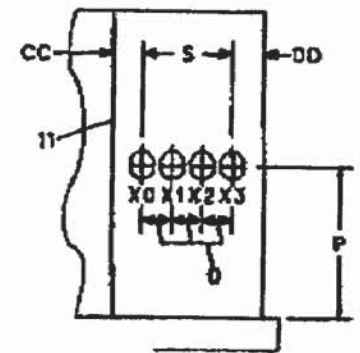
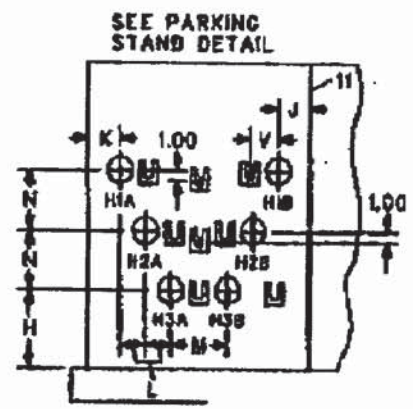
Tag 10605
 Date of manufacture: 03/1999
 Stored at Dave's Yard

TITLE
OUTLINE TRANSFORMER
 FIRST MADE FOR DTBD THREE PHASE COMPAD IV

- 1 - TANK
- 2 - FILLER
- 3 - LIFTING LUGS
- 4 - BASE HOLD DOWN LUGS
- 5 - DOOR HANDLE WITH PROVISION FOR PADLOCK
- 6 - TRANSFORMER NAMEPLATE
- 7 - CABINET, REMOVABLE
- 8 - SILL, REMOVABLE
- 9 - HANDHOLE HOOD, REMOVABLE
- 10 - CABINET HOOD, REMOVABLE
- 11 - GROUND PLANE OR REMOVABLE PARTITION
- 12 - HV COMPARTMENT DOOR, REMOVABLE
- 13 - LV COMPARTMENT DOOR, REMOVABLE, PADLOCK PROVISK
- 14 - RADIATORS
- 15 - HANDHOLE
- 16 - HV & LV TANK GROUND INSIDE CABINET



NOTE:
 TRANSFORMER MUST BE LOCKED.
 PADLOCK TO BE PROVIDED BY USER.



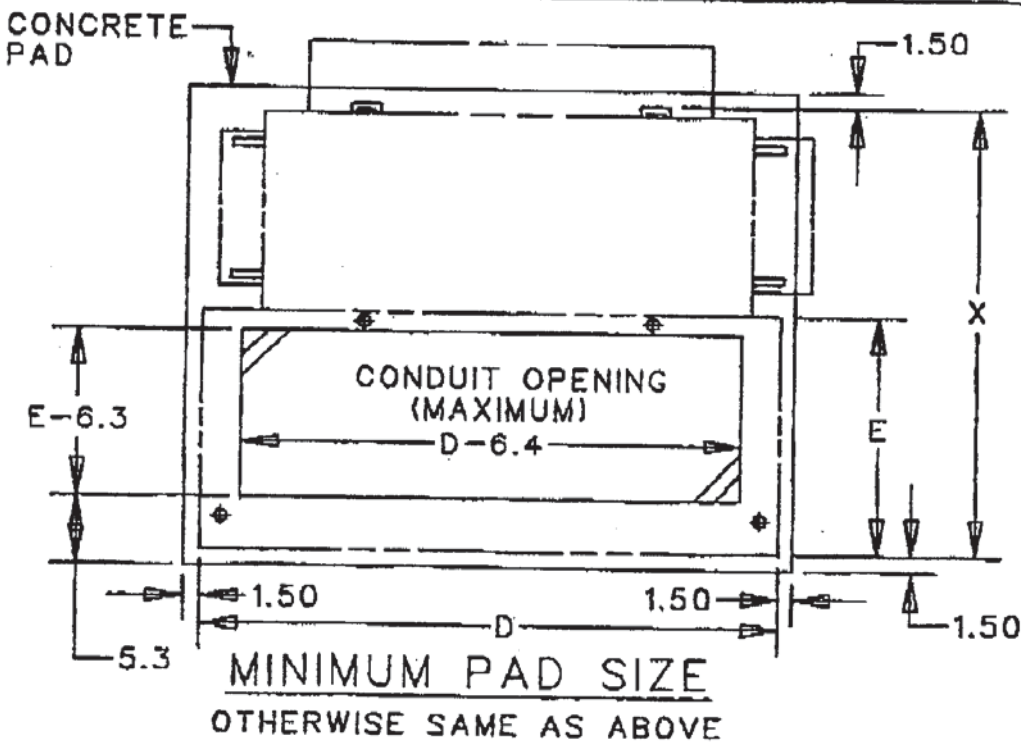
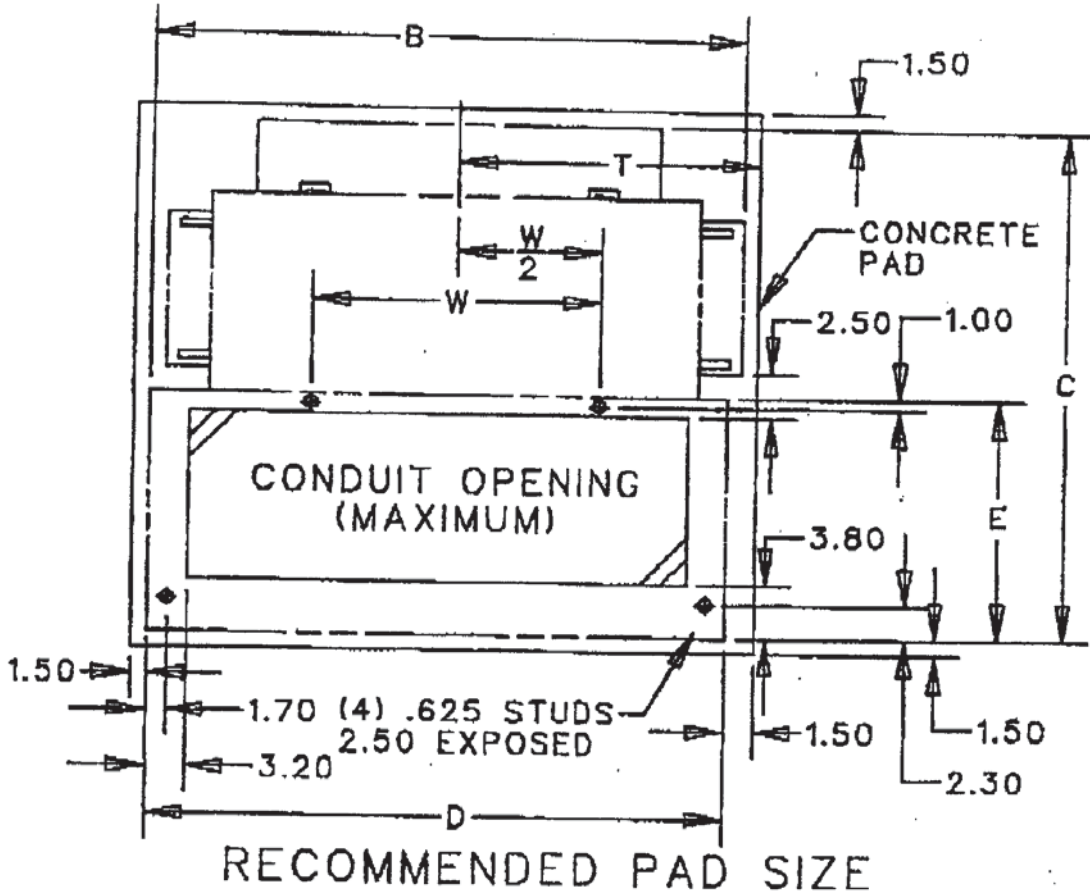
REVISIONS	
1	REWORKED. CIVIL CONCRETE PAD NOTS
2	
RE	

MADE BY J. BRIDGES DE MARTO	APPROVALS	HICKORY	3100 B8271K900-025
RC DRAWN BY L. KUNA DYALCO			<small>CONT ON SH SH</small>

KEY
CONT ON SHEET

TITLE
PAD, CONCRETE
FIRST MADE FOR

REVISIONS



NOTE:
FOR TABULATED
DIMENSION VALUES
SEE THE TS.

IA

PRINTS TO

MADE BY A. PERO 3/7/89
RE-*McH...* 1/2/89

APPROVALS

HICKORY

DIV OR
DEPT
LOCATION

3100
A8271J154P01
CONT ON SHEET - SH NO 1

UNIT 27

WARNING ADVERTENCIA
⚡
DANGER OF ELECTRIC SHOCK
CAUTION: OPEN DOOR
DO NOT TOUCH
INTERNAL PARTS
OR WIRING
UNTIL THE
DOOR IS
CLOSED
AND
THE
DOOR
IS
LOCKED
OR
THE
DOOR
IS
CLOSED
AND
THE
DOOR
IS
LOCKED

